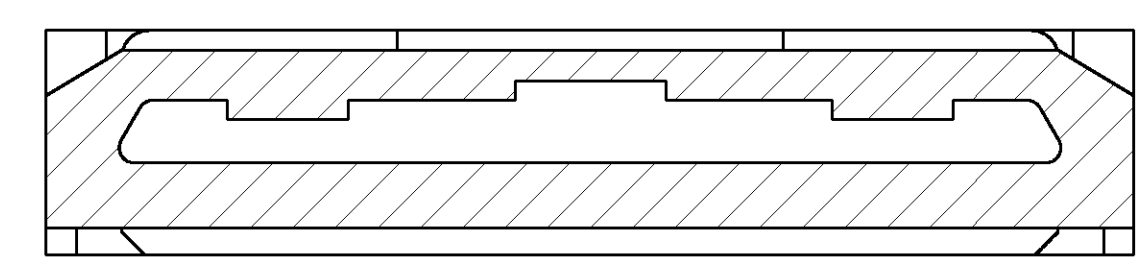
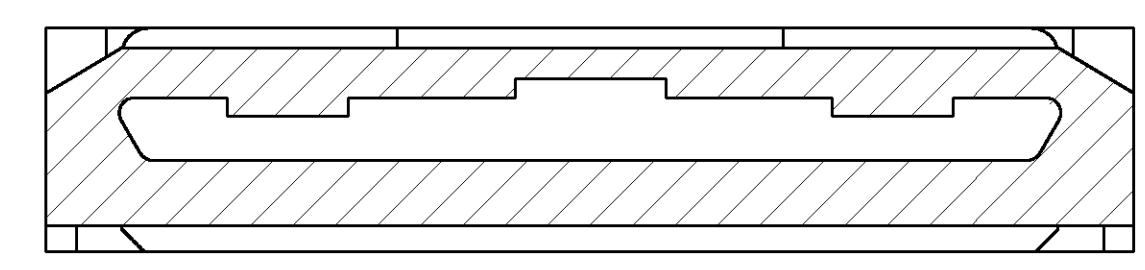


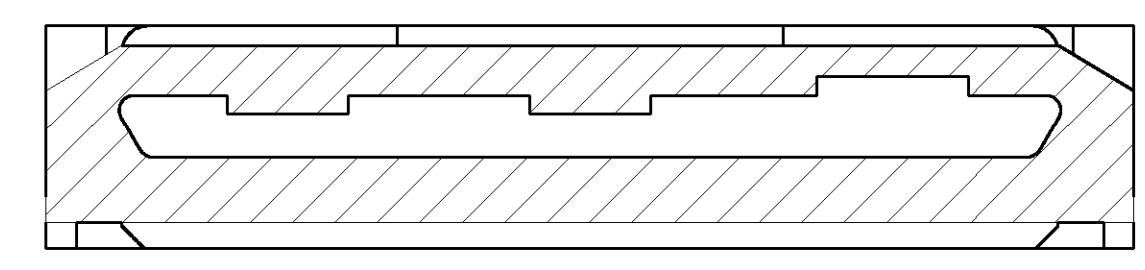
558666-5
KEY 5
TBD



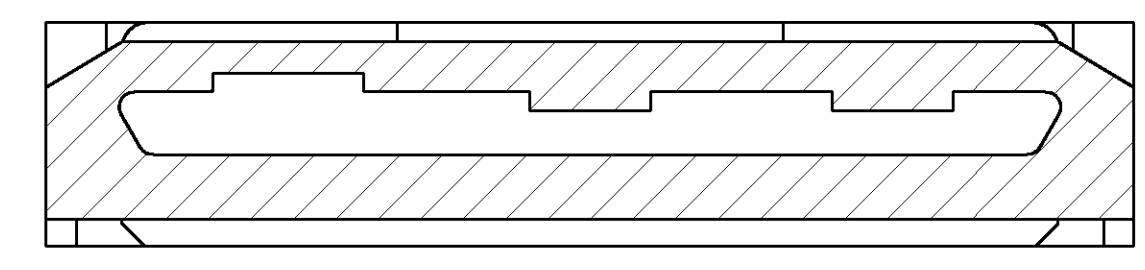
558666-4
KEY 4
LAN



558666-3
KEY 3
MODEM

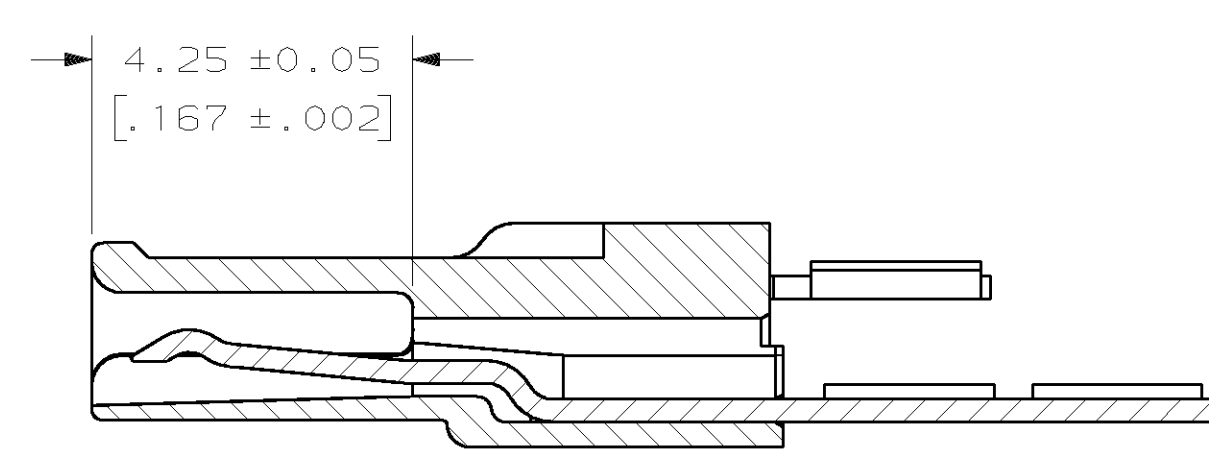


558666-2
KEY 2
MULTI-FUNCTION



558666-1
KEY 1
CLOSED

KEYING OPTIONS
SOME DETAIL OMITTED FOR CLARITY



SECTION A-A

△ HOUSING: NYLON MOLDING COMPOUND, BLACK.
 TERMINALS: 0.3[.012] THICK PH05 BRONZE.
 PLATING: NICKEL UNDERPLATE OVER ENTIRE TERMINAL. 2.54μm[.000100] MINIMUM THICKNESS.
 LOCALIZED PLATING AREA: 0.254μm[.000010] THICK GOLD OVER 1.016μm[.000040] MINIMUM THICK PALLADIUM NICKEL (OVER 0.051μm[0.000002] MINIMUM THICK GOLD WHEN REQUIRED BY PROCESS CONDITIONS).
 2. 558666-1 KEY1 (CLOSED) AS SHOWN.

KEY 5	558666-5
KEY 4	558666-4
KEY 3	558666-3
KEY 2	558666-2
KEY 1	558666-1
DESCRIPTION	PART NUMBER

THIS DRAWING IS A CONTROLLED DOCUMENT.		DWN: RYBarker 10/31/94	AMP Incorporated Harrisburg, PA 17105-3608
DIMENSIONS: mm [INCHES]		CHK: B. FOX 10/31/94	
TOLERANCES UNLESS OTHERWISE SPECIFIED:		DWG: WOLLA 10/31/94	NAME: CONNECTOR ASSEMBLY, CABLE, 15 POSITION, INFOPORT, SERIES III
0 PLC ±	1 PLC ±	2 PLC ±	3 PLC ±
4 PLC ±	5 PLC ±	6 PLC ±	7 PLC ±
MATERIAL: △	FINISH: △	WEIGHT: -	SIZE: A1
CUSTOMER DRAWING		SCALE: 10:1	SHEET 1 OF 1